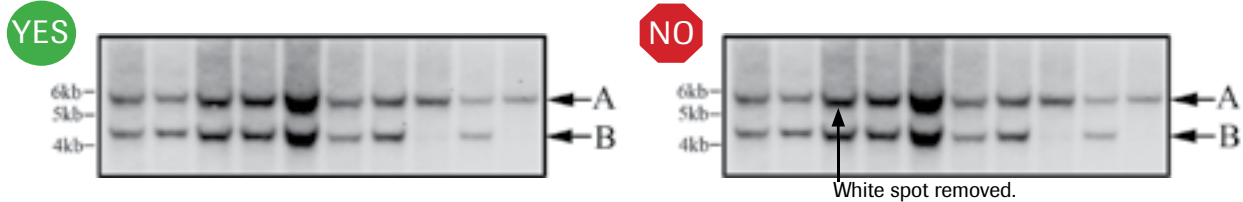


Digital Image Dos and Don'ts

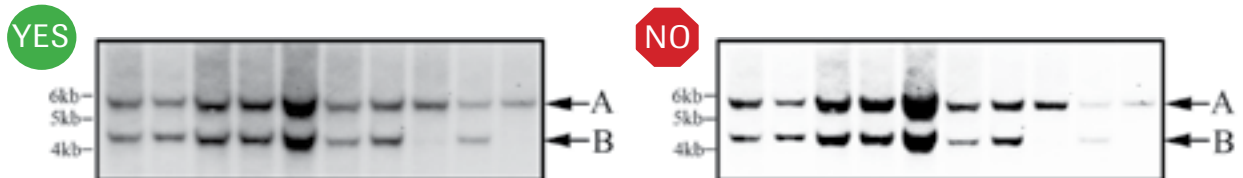


Before preparing manuscript figures, please read the Information for Authors at <http://www.jimmunol.org/info/authors#msprep>

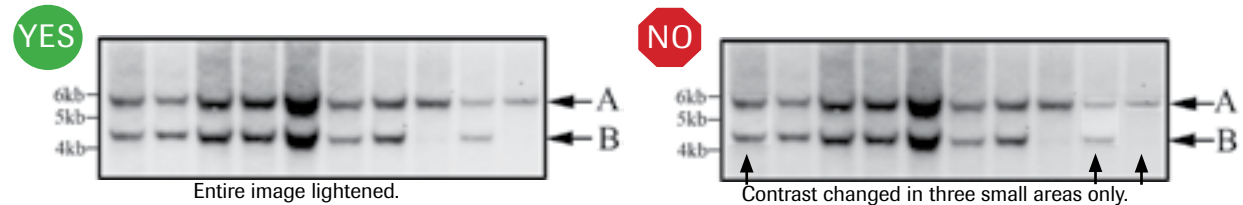
1. Do not erase any part of the image, including the background.



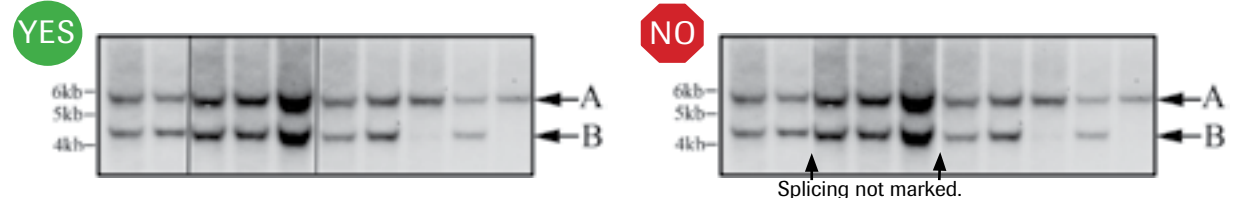
2. Do not use excessive contrast that removes background.



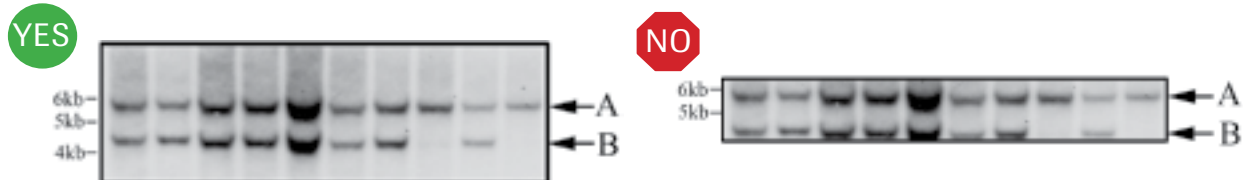
3. Make any adjustments to brightness or contrast equally across the entire image.



4. Indicate any splicing of data from a single experiment by contrasting (black or white) lines; state the manipulation in the legend. Images from different experiments should not be spliced to form a new single image.



5. Crop gels and blots conservatively, retaining important bands.



- All images submitted to *The Journal of Immunology* must accurately represent the original data.
- Original data (digital files, autoradiographs, films, etc.) for all experiments should be fully annotated, secured, and retrievable for up to 10 years.
- The original image file (raw data file) should be kept in an unprocessed and non-compressed file format.
- Figures that are compiled into multi-figure panels should be kept individually.