

Supplemental Figure 1

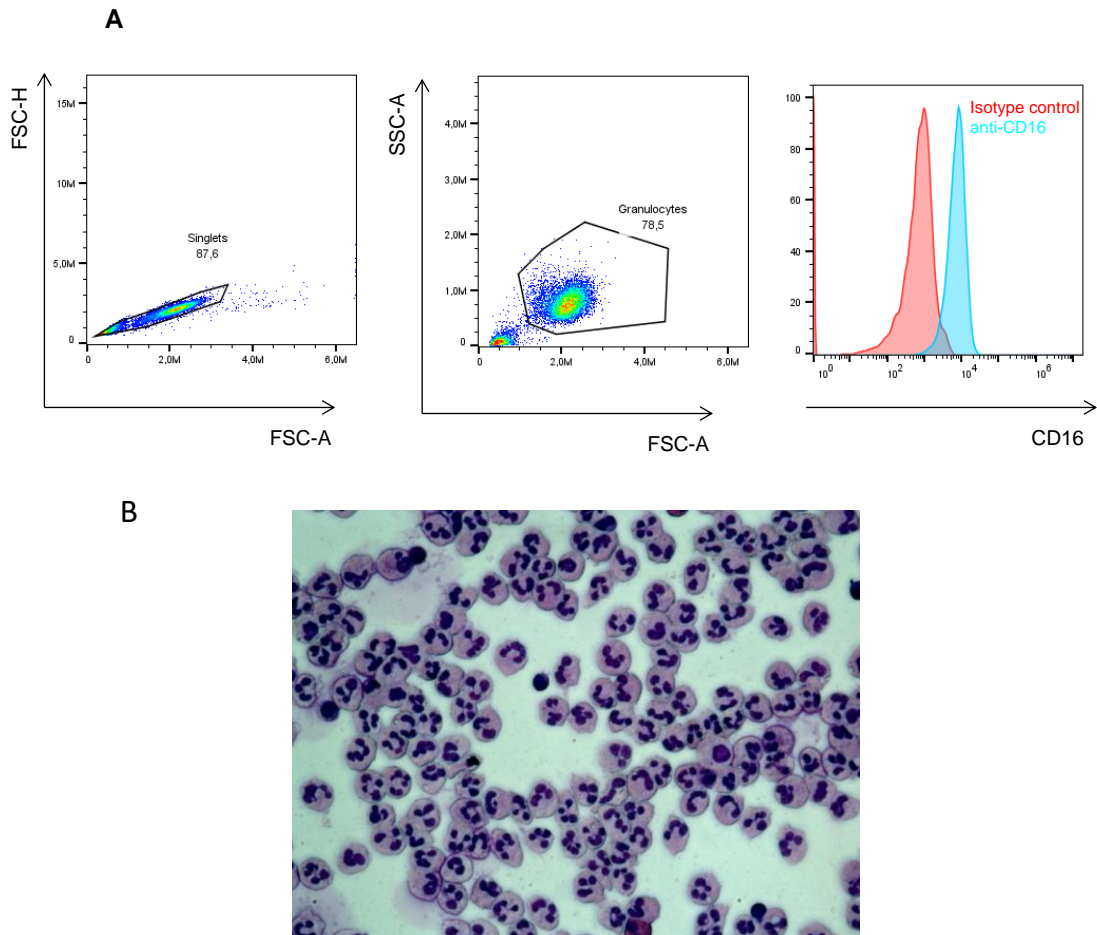


Figure S1: (A) Expression of CD16⁺ neutrophils isolated from one ENL patient was assessed by flow cytometry. (B) Neutrophils were observed immediately after isolation from the blood (0 h of culture) with normal morphology. Cytopreps were stained with Panotico and examined by light microscopy.

Supplemental Figure 2

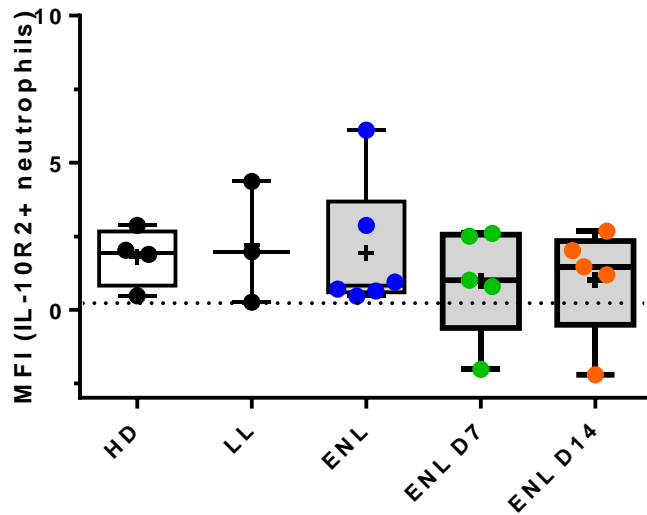


Figure S2: MFI values for each leprosy patient and healthy individuals examined. MFI was calculated by subtracting the MFI of the immunoconjugated-stained neutrophils from the corresponding IL-10R2-stained cells. Box plots show median, interquartile range, sample minimum, and maximum. +, indicate the mean. Points represents individual patients. HD, healthy donors; LL, lepromatous leprosy patients; ENL, erythema nodosum leprosum before treatment; ENL D7; and D14, ENL patients 7 and 14 days after starting thalidomide treatment.