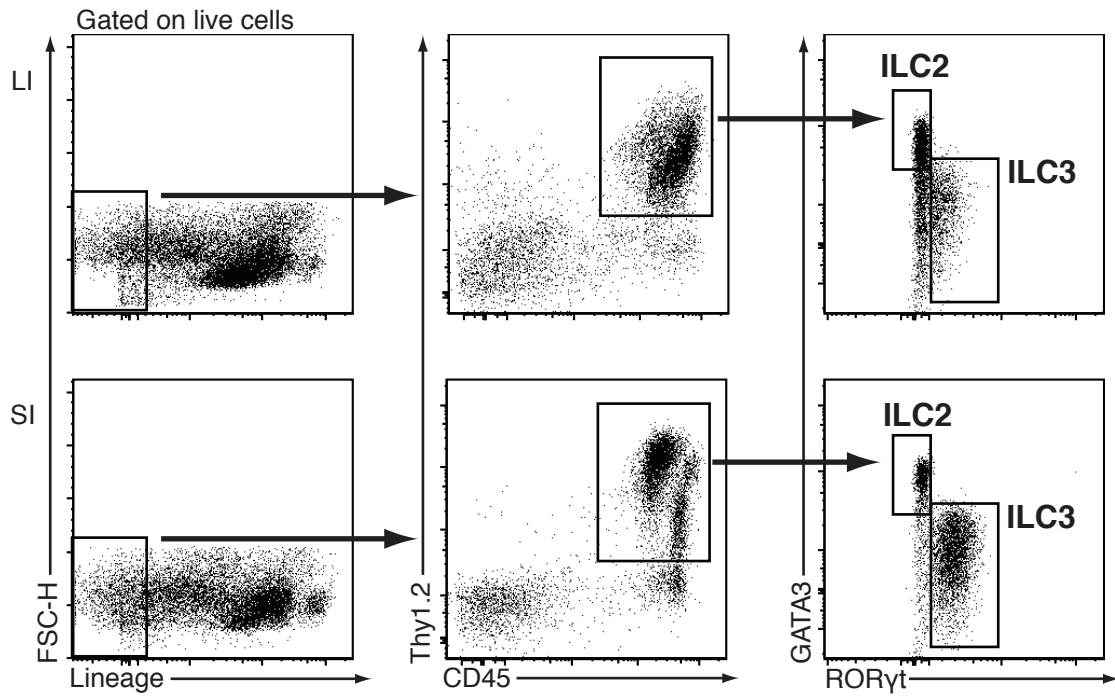
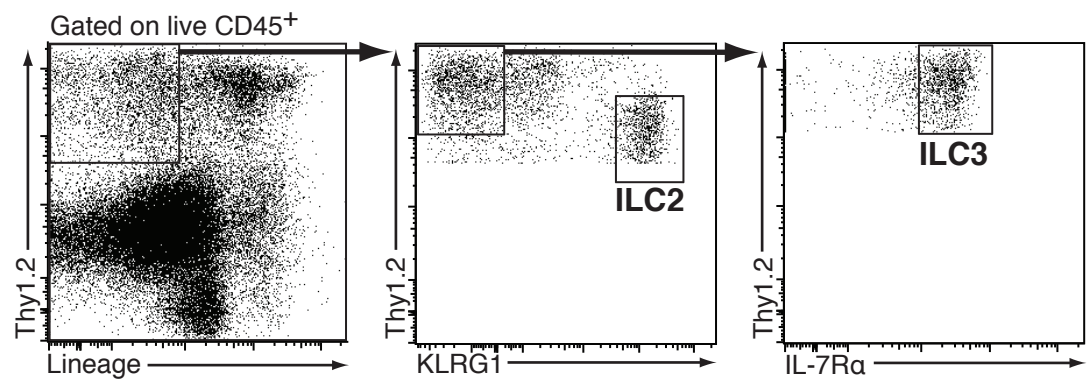


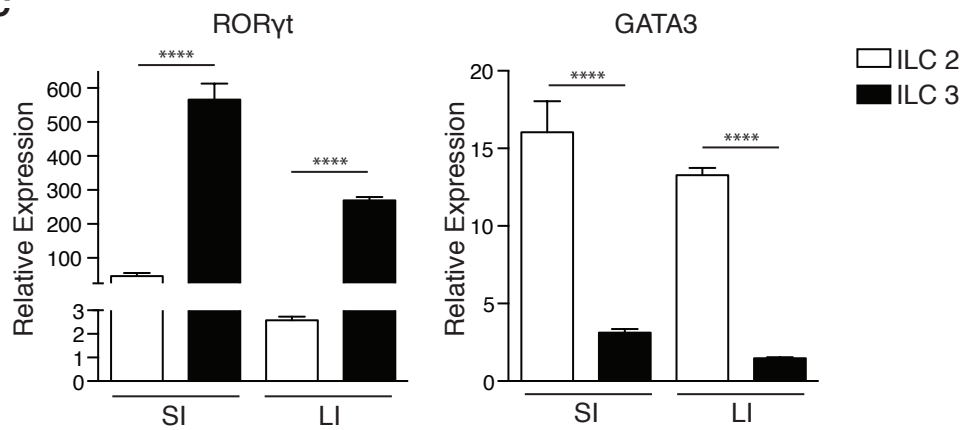
**A Staining Gating Strategy**



**B Sorting Gating Strategy**



**C**



Supplemental Figure 1: ILC sorting strategy and verification

**Figure S1. ILC staining, sorting strategy and verification.**

**(A)** Staining strategy and representative plots for ILC2 and ILC3 identification.

**(B)** Sorting strategy and representative plots for ILC2 and ILC3 subsets.

**(C)** Real-time PCR for GATA-3 and ROR $\gamma$ t was performed using cDNA generated from SI and LI lamina propria ILC subsets. Data represent three independent experiments. Error bars show SEM. One-way ANOVA with Holm-Sidak multiple comparisons test.

\*\*\*\*p<0.0001, \*\*\*p<0.001