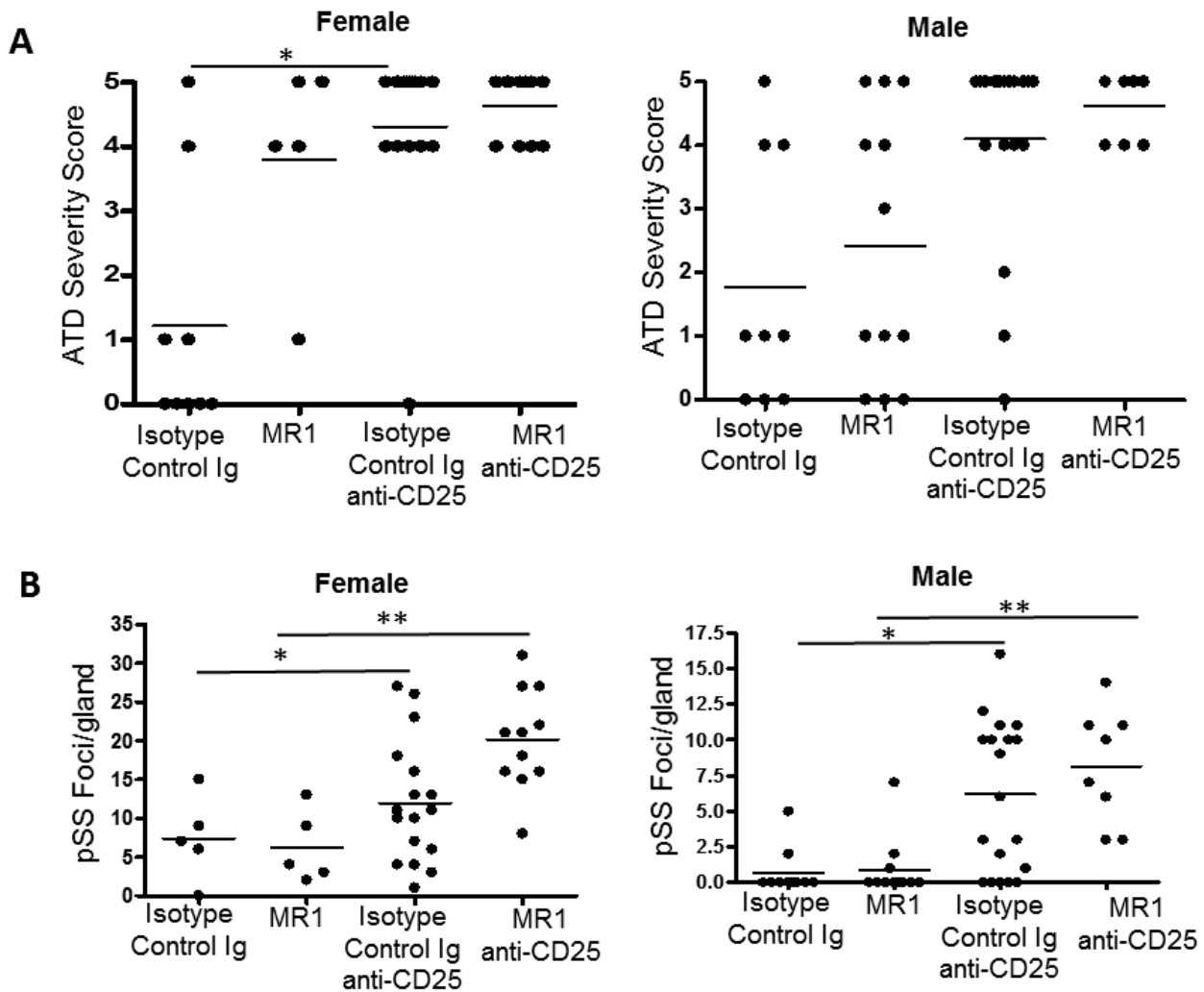


Supplemental Figure 1. MR1 has no effect on ATD if given after thyroid lesions begin to develop. ATD was measured in CD28^{-/-} NOD.H-2h4 male mice, given MR1 or isotype control at 10 wk of age, 2 wk after they received NaI-supplemented water to promote ATD, age:14 weeks of age, n=4.



Supplemental Figure 2. Transient depletion of Treg greatly increases the incidence of severe ATD and pSS in PD-1^{-/-} NOD.H-2h4 mice. ATD (A) and pSS (B) disease scores were measured in 14-16 wk old PD-1^{-/-} NOD.H-2h4 females (left) or males (right), 6-7 wk old, given anti-CD25 or rat IgG. Some were given MR1 or isotype control mAb as indicated, (A)* p<0.05: Isotype control vs. anti-CD25 isotype control; (B) Isotype vs. anti-CD25 isotype (*p<0.05) and MR1 vs. MR1/anti-CD25 (** p<0.005).